

Maritime Traffic Regulation, Section 126 - 129

Statutory authority: Laid down by the Ministry of Transport and Communications on 10 February 2021 (no. 523) pursuant to sections 2, 7, 11 and 13, of Act no. 70 of 21 June 2019 relating to harbours and fairways, etc. (the Harbour Act)

Section 126. (Ban on transit in Kobbeleia)

The following vessels must not use the waters from Kjærringskjæret lantern in the west to Vonflua beacon in the east for transit:

- a) vessels carrying hazardous or noxious cargo with a length greater than 120 metres
- b) vessels with a length greater than 150 metres
- c) vessels with a length greater than 120 metres and a draught greater than 7 metres
- d) vessels with a draught greater than 8 metres.

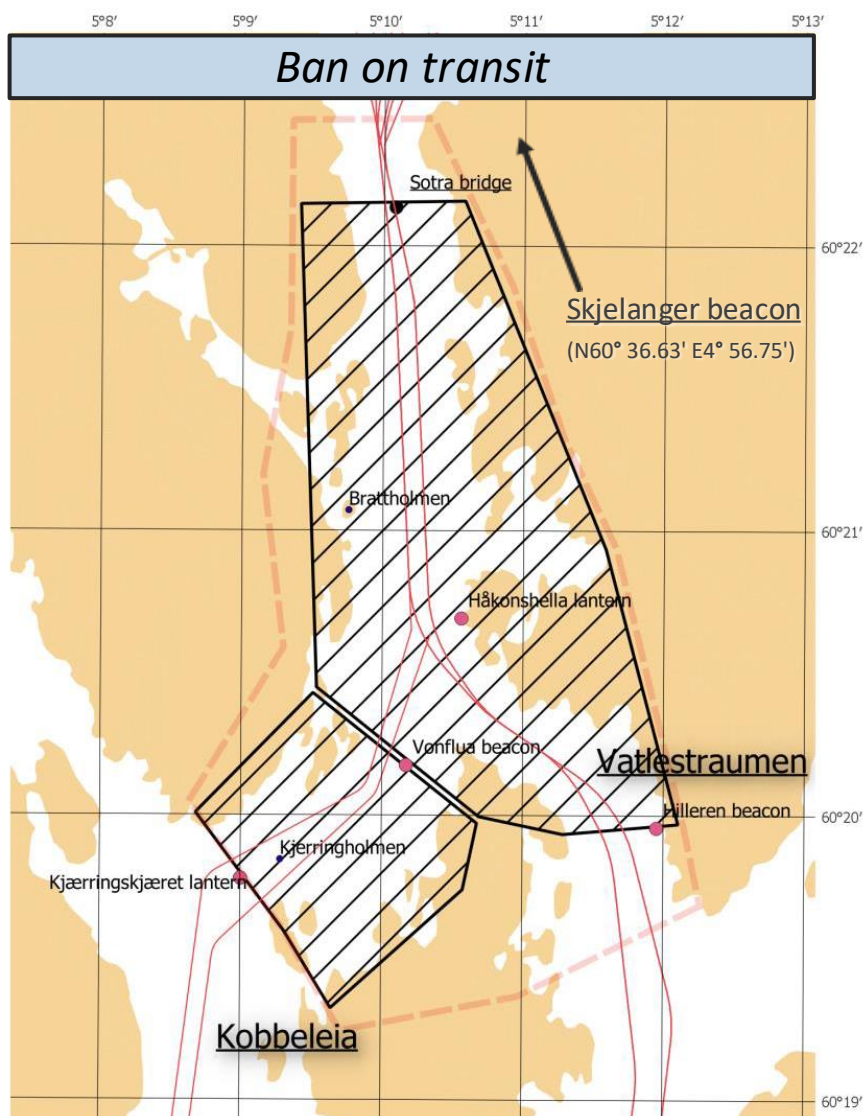
Section 129. (Ban on transit in the waters on the stretch Vattlestraumen to Sotra bridge)

The following vessels must not use the waters from Hilleren beacon in the south to Sotra bridge in the north for transit:

- a) vessels carrying hazardous or noxious cargo with a length greater than 150 metres
- b) vessels with a length greater than 200 metres
- c) passenger vessels with a length greater than 255 metres.

Calling at or departing from docks, anchorage sites or mooring sites in all the waters between Hilleren beacon in the south and Skjelanger beacon in the north is not considered transit traffic.

Continues on page 2! (section 127 – 128)



Please note that this document is an English translation of the Norwegian regulation. Should there be any conflict between the Norwegian regulation and this translation, the wording in the Norwegian regulation will have precedence.

Updated: 2021-04-01
Link to Lovdata: <https://lovdata.no/forskrift/2021-02-10-523/§126>



KYSTVERKET
NORWEGIAN COASTAL ADMINISTRATION

Maritime Traffic Regulation, Section 126 - 129

Statutory authority: Laid down by the Ministry of Transport and Communications on 10 February 2021 (no. 523) pursuant to sections 2, 7, 11 and 13, of Act no. 70 of 21 June 2019 relating to harbours and fairways, etc. (the Harbour Act)

Continued from page 1!

Section 127. (Obligation to use specific waters in Kobbeleia)

South-bound vessels must use the waters north of Kjerringholmen and north-bound vessels must use the waters south of Kjerringholmen.

Section 128. (Ban on passing in Kobbeleia and Vattlestraumen)

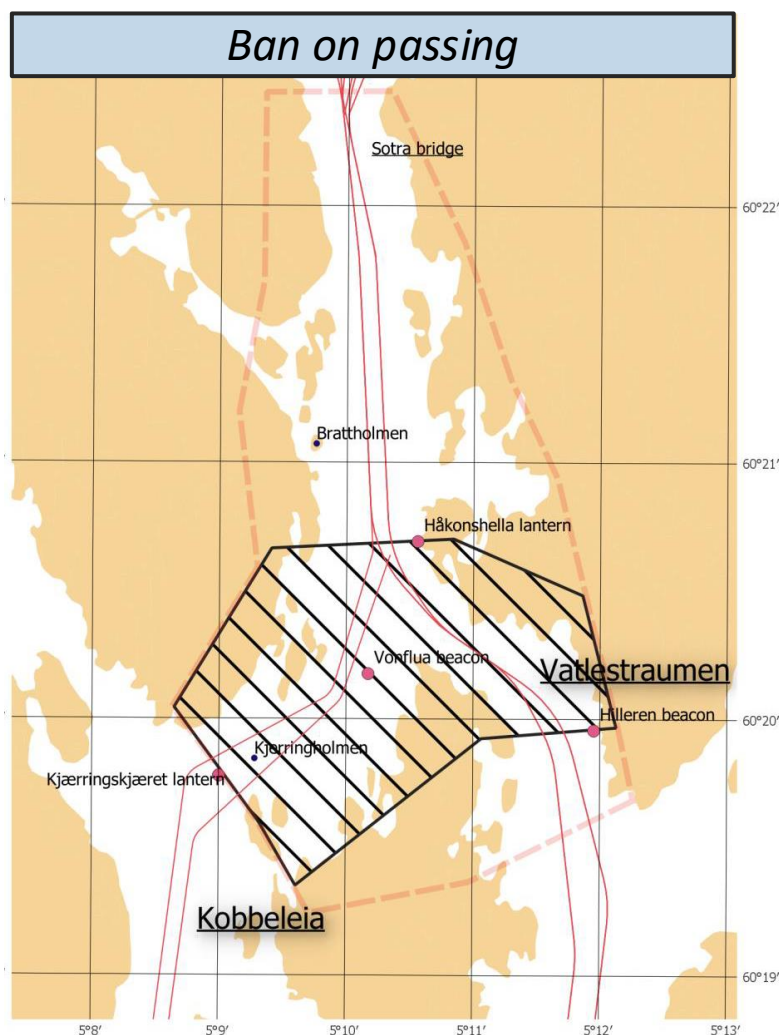
Vessels carrying hazardous or noxious cargo with a length greater than 100 metres and vessels with a length greater than 120 metres must not pass other vessels in the following waters:

- a) from Kjærringskjæret lantern in the south to Håkonshella lantern in the north
- b) from Hilleren beacon in the south to Håkonshella lantern in the north.

If visibility is less than 0.5 nautical mile, vessels with a length greater than 70 metres must not pass other vessels.

In the instances mentioned in the first and second paragraphs, vessels must maintain a distance of at least 0.5 nautical mile from other vessels sailing in the same direction.

The first, second and third paragraph does not apply when passing vessels with a length less than 50 metres when the vessel traffic centre has given permission for such a passage.



Please note that this document is an English translation of the Norwegian regulation. Should there be any conflict between the Norwegian regulation and this translation, the wording in the Norwegian regulation will have precedence.

Updated: 2021-04-01
Link to Lovdata: <https://lovdata.no/forskrift/2021-02-10-523/§126>



KYSTVERKET
NORWEGIAN COASTAL ADMINISTRATION