

# Maritime Traffic Regulation, Section 143 - 145

**Statutory authority:** Laid down by the Ministry of Transport and Communications on 10 February 2021 (no. 523) pursuant to sections 2, 7, 11 and 13, of Act no. 70 of 21 June 2019 relating to harbours and fairways, etc. (the Harbour Act)

## **Section 143.** (*Ban on use of waters in Skatestraumen*)

Vessels with a greater length than 225 metres must not use the waters between Hornelsneset lantern in the south and Gangsøya beacon in the north.

## **Section 144.** (*Ban on passing in Skatestraumen*)

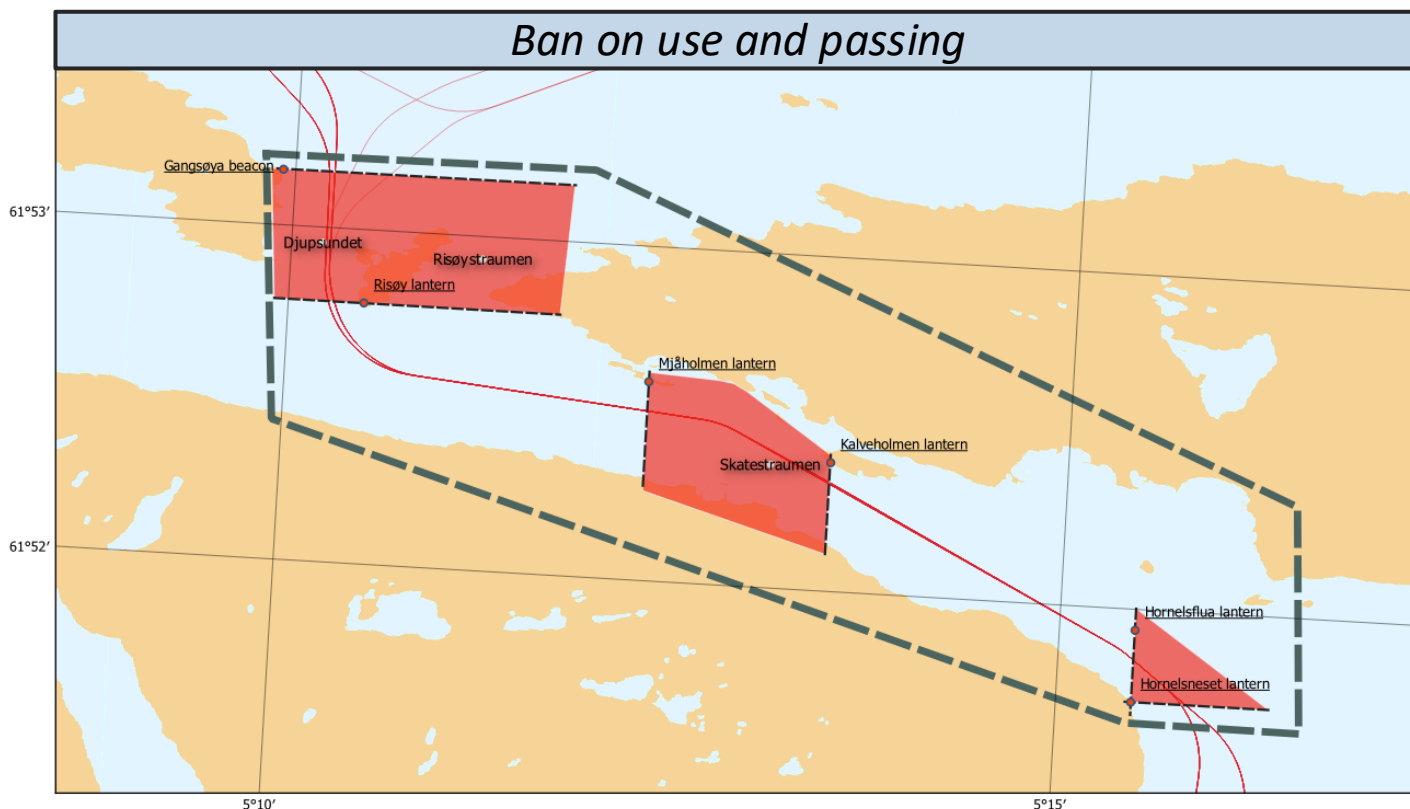
Vessels with a length greater than 120 metres must not pass other vessels in the waters between Hornelsneset lantern in the south and Hornelsflua lantern in the west.

Vessels with a length greater than 120 metres or a draught greater than 8,5 metres must not pass other vessels in the waters between Kalveholmen lantern in the east and Mjåholmen lantern in the west.

The first paragraph does not apply when passing vessels with a length less than 50 metres when the vessel traffic centre has given permission for such a passage.

## **Section 145.** (*Ban on passing in Djupsundet and Risøystraumen*)

Vessels must not pass other vessels in the waters between Risøy lantern in the south and Gangsøya beacon in the north.



*Red areas in the chart indicate parts not to pass vessels given in section 144 and 145.*

Please note that this document is an English translation of the Norwegian regulation. Should there be any conflict between the Norwegian regulation and this translation, the wording in the Norwegian regulation will have precedence.

Updated: 2022-01-01

Link to Lovdata: <https://lovdata.no/forskrift/2021-02-10-523/§143>



**KYSTVERKET**  
NORWEGIAN COASTAL ADMINISTRATION